

DAFTAR PUSTAKA

- Anonim. (2023). *Sinergitas Pemerintah Dengan Komisi iv DPR RI Atur Strategi Tepat Guna, untuk Tingkatkan Tata Kelola Sawit Indonesia*. Kementerian pertanian direktorat jendral perkebunan. <https://ditjenbun.pertanian.go.id/sinergitas-pemerintah-dengan-komisi-iv-dpr-ri-atur-strategi-tepat-guna-untuk-tingkatkan-tata-kelola-sawit-indonesia/>
- bakri, w., & karimudin, y. (2019). Substitusi Limbah Cair Pabrik Kelapa Sawit Sebagai Pupuk Cair Pada Produksi Tanaman Kelapa Sawit (*elaeis guineensis*, jacq). *Journal of chemical information and modeling*, 53(9), 1689–1699.
- Gillot, c. (2005). Perbandingan Unsur Hara Kalium Pada Lahan Primer Dan Lahan Gambut. *Jurnal agrikultural*, vol 30 (7)(13).
- Harahap, i. Y., s. Sumaryanto, hidayat, t. C., fauzi, w. R., & y. (2017). Produksi Jenis Kelamin Tandan Bunga Kelapa Sawit Dan Responsnya Terhadap Perlakuan Exogenous Hormone Tanaman Pada Lahan Yang Mengalami Kekeringan. *Jurnal penelitian kelapa sawit*, 25(1), 31–46. <https://doi.org/10.22302/iopri.jur.jpks.v25i1.23>
- Hastuti, p. B. (2011). *Pengelolaan Limbah Kelapa Sawit*. Deepublish.
- Henry loekito. (2002). Teknologi Pengelolaan Limbah Industri Kelapa Sawit. *Jurnal teknologi lingkungan*, 3(3), 242–250.
- Kurniawan, a., amalia, r., & nasution, z. P. S. (2017). *Tekno Ekonomi Kelapa Sawit Kebun Dan Pabrik Pengolahan Kelapa Sawit*. Pusat penelitian kelapa sawit. [Http://www.iopri.org](http://www.iopri.org)
- Lubis, m. F., & lubis, i. (2018). *Analisi poduksi kelapa sawit (elaeis guineensis jacq.) Di kebun buatan, kabupaten pelalawan riau*. Dapartermen agronomi dan hortikultura, fakultas pertanian institut pertanian bogor.
- Mangoensoekarjo, s., & h, s. (2003). *Manajemen agrobisnis kelapa sawit*. Ugm-press,yogyakarta.
- Muhadi, a. (2013). Studi Pemanfaatan Limbah Cair Sawit Sistem Land Application Pada Perkebunan Kelapa Sawit Di Pt.Tritunggal Sentra Buana, Kutai Kartanegara, Kalimantan Timur. In *skripsi*. Politeknik pertanian negeri pangkajene dan kepulauan pangkep.
- Muqorobin., a., parwati., w., d., u., & wirianata., h. (2017). Kajian Pengaruh Pemberian Lcpks Dan Tankos Terhadap Produksi Kelapa Sawit. *Jurnal agromast*, 3(2252), 58–66. [Http://www.tjybjb.ac.cn/cn/article/download/articlefile.do?attachtype=pdf&id=9987](http://www.tjybjb.ac.cn/cn/article/download/articlefile.do?attachtype=pdf&id=9987)

- Prayitno, s., dewa, d. I., & sunarminto, b. H. (2008). Produktivitas kelapa sawit (*elaeis guineensis jacq.*) yang dipupuk dengan tandan kosong dan limbah cair pabrik kelapa sawit. *Ilmu pertanian*, 15(1), 37–48. <https://doi.org/10.1593/neo.07916>
- Rahman, & nururrahmah. (2016). Efektifitas Limbah Padat Dan Cair Kelapa Sawit Serta Ampas Sagu Terhadap Tanaman Bawang Merah. *Prosoding seminar nasional*, 02(1), 832. <https://journal.uncp.ac.id/index.php/proceding/article/view/569>
- Ridha, a. (2018). Faktor-Faktor Yang Mempengaruhi Produksi Kelapa Sawit Di Kabupaten Aceh Timur. *Jurnal samudra ekonomika*, 2(april), 13.
- Runhayat, a. (1995). Peranan Unsur Hara Kalium Dalam Meningkatkan Hasil Dan Daya Tahan. *Jurnal penelitian dan pengembangan pertanian.xiv (1)*, xiv (1), 10–15.
- Salisbury, f. B., & ross. (1997). *Fisiologi tumbuhan. Terjemahan dian rukmana dan sumaryono*. Itb.
- Setyawan, p., wirianata, h., & rohmiyati, s. M. (2016). Pengaruh pemupukan dan jenis tanah terhadap penyakit senjkleh di perkebunan kelapa sawit. *Jurnal agromast*, 1(2).
- Silalahi, b. M., & supijatno. (2017). Pengelolaan limbah kelapa sawit (*elaeis guineensis jacq.*) Di angšana estate, kalimantan selatan waste management of palm oil (*elaeis guineensis jacq.*) In angšana estate, south kalimantan. *Bul. Agrohorti*, 5(3), 373–383.
- Sutanto, r. (2022). *Pengembangannya., penerapan pertanian organik. Permayarakatan dan pengembangannya*. Penerbit kanisius.
- Tariq., m., & mott, c. J. B. (2007). The significance of boron in plant nutrition and environment. *A review. J. Agronomy*, 6(1), 1–10.
- Turner, p. D., & gillbanks, r. A. (2003). *oil palm cultivation and management. 2nd edition*. The incorporated society of planters.
- Wasil, a., & chairudin, c. (2023). Pengaruh jumlah pelepah penyangga dalam proses penunasan (pruning) terhadap produksi tanaman kelapa sawit (*elaeis guineensis jacq.*) diperkebunan tanoh makmue. *Biofarm: jurnal ilmiah pertanian*, 19(1), 39. <https://doi.org/10.31941/biofarm.v19i1.2634>
- Wijayani, s., wirianata, h., & gunawan, s. (2022). Frond base fracture and dynamics of palm oil inflorescence applied with different nutrient sources. *Ajarcd / asian journal of applied research for community development and empowerment*, 6(1), 25–30. <https://doi.org/10.29165/ajarcde.v6i1.84>

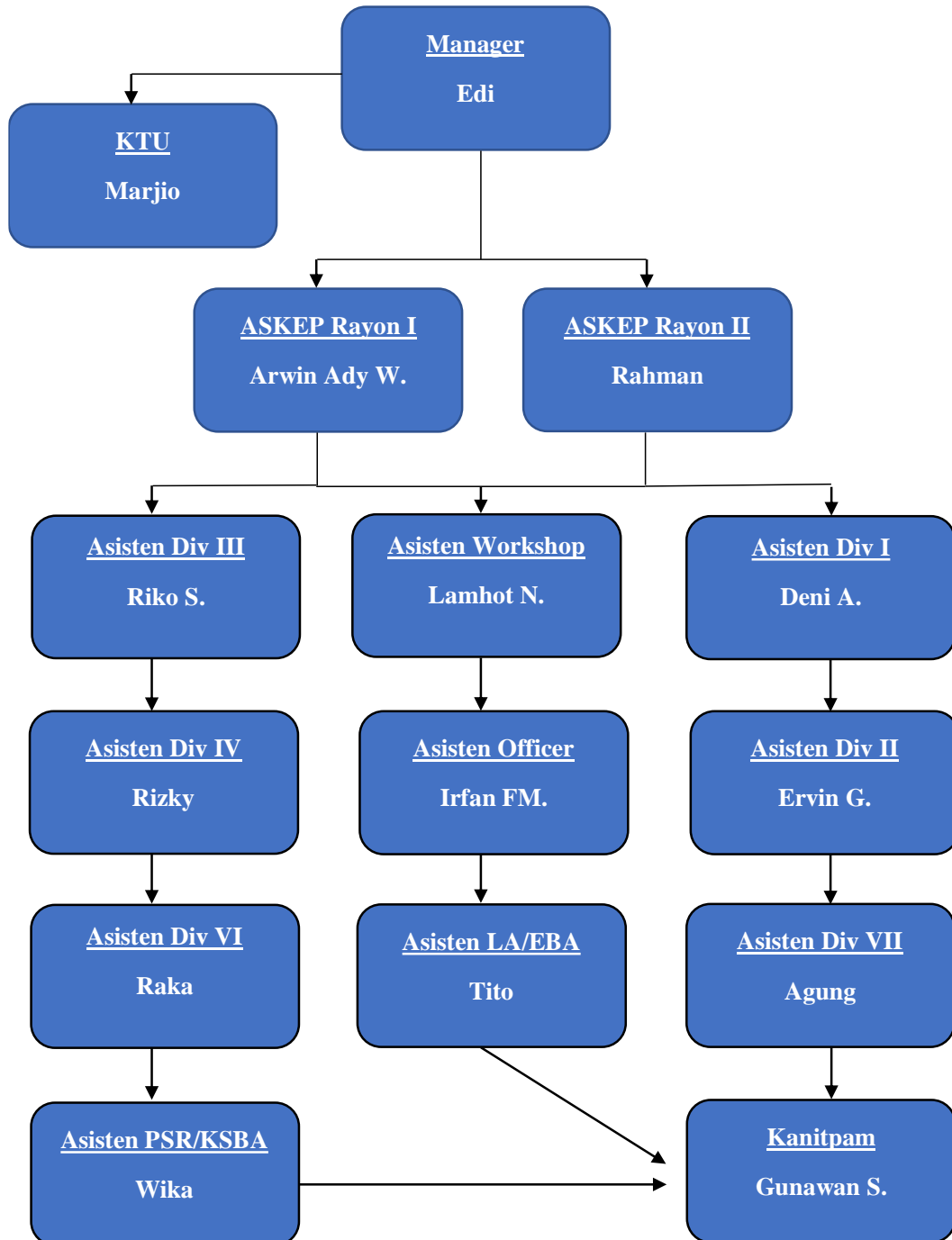
- Wirayuda, h., sakhiah, s., & ningsih, t. (2022). Kadar kalium pada tanah dan tanaman kelapa sawit (*elaeis guineensis jacq*) pada lahan aplikasi dan tanpa aplikasi tandan kosong kelapa sawit. *Tabela jurnal pertanian berkelanjutan*, 1(1), 19–24. <https://doi.org/10.56211/tabela.v1i1.168>
- Wirianata, h., rohmiyati, s. M., & wijayani, s. (2017). Faktor Penyebab Patah Pangkal Pelelah Pada Tanaman Kelapa Sawit. *Seminar nasional hasil penelitian (shpn)-vii lembaga penelitian dan pengabdian kepada masyarakat universitas PGRI Semarang*, 217–221.
- Writer. (2020). *Penyakit patah pangkal pelelah kelapa sawit*. Plantation key technology. <https://pkt-group.com/sawitnotif/penyakit-patah-pangkal-pelelah-kelapa-sawit/>

LAMPIRAN

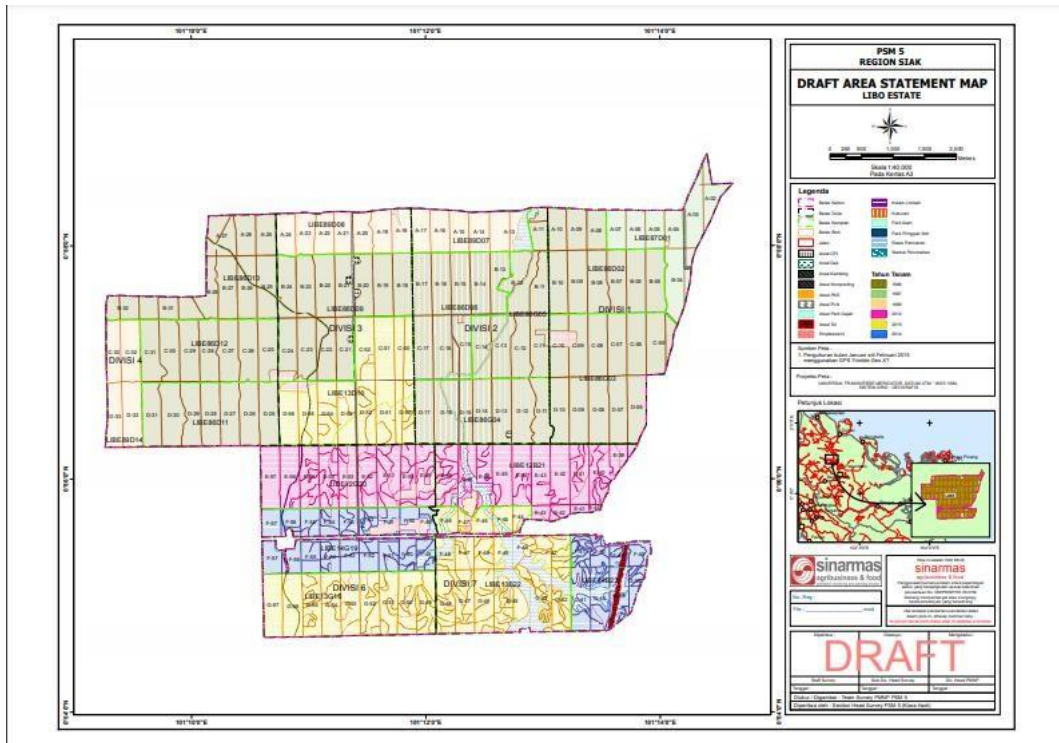
Lampran 1. Struktur organisasi kebun Libo Estate (LIBE)

Struktur Organisasi Libo Estate

2023



Lampran 2. Peta kebun Libo Estate (LIBE)



Lampran 3. Output produksi independent t test

Group Statistics					
	LCPKS	N	Mean	Std. Deviation	Std. Error Mean
TONASE_2018	1.00	2	26.2595	.43770	.30950
	2.00	2	24.8175	.41507	.29350
TONASE_2019	1.00	2	26.7965	.51265	.36250
	2.00	2	25.5355	.55366	.39150
TONASE_2020	1.00	2	28.4325	.32173	.22750
	2.00	2	26.3405	.10253	.07250
TONASE_2021	1.00	2	29.2675	.78277	.55350
	2.00	2	28.8845	.07283	.05150
TONASE_2022	1.00	2	29.9170	1.04369	.73800
	2.00	2	29.9015	.22698	.16050

Independent Samples Test				
		t-test for Equality of Means		
		Sig. (2-tailed)	Mean Difference	Std. Error Difference
TONASE_2018	Equal variances assumed	.077	1.44200	.42654
	Equal variances not assumed	.078	1.44200	.42654
TONASE_2019	Equal variances assumed	.142	1.26100	.53355
	Equal variances not assumed	.143	1.26100	.53355
TONASE_2020	Equal variances assumed	.013	2.09200	.23877
	Equal variances not assumed	.049	2.09200	.23877
TONASE_2021	Equal variances assumed	.562	.38300	.55589
	Equal variances not assumed	.614	.38300	.55589
TONASE_2022	Equal variances assumed	.985	.01550	.75525
	Equal variances not assumed	.987	.01550	.75525

Lampran 4. Output berat janjang rerata Independent t test

Group Statistics					
	LCPKS	N	Mean	Std. Deviation	Std. Error Mean
BJR_2018	1.00	12	11.0442	.22765	.06572
	2.00	12	10.8717	.22550	.06510
BJR2019	1.00	12	11.3642	.12479	.03602
	2.00	12	11.2167	.06624	.01912
BJR_2020	1.00	12	12.0967	.30251	.08733
	2.00	12	11.7367	.24999	.07217
BJR_2021	1.00	12	13.3617	.50165	.14481
	2.00	12	12.8767	.52053	.15026
BJR_2022	1.00	12	15.8267	1.02908	.29707
	2.00	12	15.2150	1.05919	.30576

Independent Samples Test

		t-test for Equality of Means		
		Sig. (2-tailed)	Mean Difference	Std. Error Difference
BJR_2018	Equal variances assumed	.076	.17250	.09250
	Equal variances not assumed	.076	.17250	.09250
BJR_2019	Equal variances assumed	.002	.14750	.04078
	Equal variances not assumed	.002	.14750	.04078
BJR_2020	Equal variances assumed	.004	.36000	.11329
	Equal variances not assumed	.004	.36000	.11329
BJR_2021	Equal variances assumed	.030	.48500	.20869
	Equal variances not assumed	.030	.48500	.20869
BJR_2022	Equal variances assumed	.165	.61167	.42631
	Equal variances not assumed	.165	.61167	.42631

Lampran 5. Output Jumlah tandan buah segar independent t test

Group Statistics					
	LCPKS	N	Mean	Std. Deviation	Std. Error Mean
JANJANG_2018	1.00	2	198.1350	3.30219	2.33500
	2.00	2	190.4000	3.42240	2.42000
JANJANG_2019	1.00	2	196.4950	3.75474	2.65500
	2.00	2	189.6900	4.07294	2.88000
JANJANG_2020	1.00	2	195.8650	2.21324	1.56500
	2.00	2	187.0250	.72832	.51500
JANJANG_2021	1.00	2	182.5300	4.87904	3.45000
	2.00	2	186.9350	.47376	.33500
JANJANG_2022	1.00	2	157.5250	5.49422	3.88500
	2.00	2	163.7700	1.24451	.88000

Independent Samples Test				
		t-test for Equality of Means		
		Sig. (2-tailed)	Mean Difference	Std. Error Difference
JANJANG_2018	Equal variances assumed	.148	7.73500	3.36283
	Equal variances not assumed	.148	7.73500	3.36283
JANJANG_2019	Equal variances assumed	.224	6.80500	3.91707
	Equal variances not assumed	.225	6.80500	3.91707
JANJANG_2020	Equal variances assumed	.033	8.84000	1.64756
	Equal variances not assumed	.086	8.84000	1.64756
JANJANG_2021	Equal variances assumed	.332	-4.40500	3.46623
	Equal variances not assumed	.421	-4.40500	3.46623
JANJANG_2022	Equal variances assumed	.257	-6.24500	3.98342
	Equal variances not assumed	.345	-6.24500	3.98342

Lampran 6.Output karakter agronomi independent t test

Group Statistics					
	LCPKS	N	Mean	Std. Deviation	Std. Error Mean
TINGGI_TANAMAN	1.00	66	533.0758	28.62022	3.52291
	2.00	66	500.1667	31.41170	3.86651
LINGKAR_TANAMAN	1.00	66	258.3333	13.41450	1.65121
	2.00	66	255.3939	17.24652	2.12290
PANJANG_PELEPAH	1.00	66	632.5455	63.84312	7.85854
	2.00	66	594.6515	49.78955	6.12867
TEBAL_PETIOL	1.00	66	45.7424	3.92746	.48344
	2.00	66	44.9394	3.81043	.46903
LEBAR_PETIOL	1.00	66	96.3182	12.49881	1.53850
	2.00	66	95.5909	9.47706	1.16655
BUNGA_JANTAN	1.00	66	1.7273	1.10308	.13578
	2.00	66	1.1061	.89664	.11037
BUNGA_BETINA	1.00	66	4.4545	2.25444	.27750
	2.00	66	2.7424	2.07780	.25576

Independent Samples Test				
		t-test for Equality of Means		
		df	Sig. (2-tailed)	Mean Difference
TINGGI_TANAMAN	Equal variances assumed	130	.000	32.90909
	Equal variances not assumed	128.890	.000	32.90909
DIAMETER_TANAMAN	Equal variances assumed	130	.276	2.93939
	Equal variances not assumed	122.575	.277	2.93939
PANJANG_PELEPAH	Equal variances assumed	130	.000	37.89394
	Equal variances not assumed	122.716	.000	37.89394
TEBAL_PETIOL	Equal variances assumed	130	.235	.80303
	Equal variances not assumed	129.881	.235	.80303
LEBAR_PETIOL	Equal variances assumed	130	.707	.72727
	Equal variances not assumed	121.173	.707	.72727
BUNGA_JANTAN	Equal variances assumed	130	.001	.62121
	Equal variances not assumed	124.792	.001	.62121
BUNGA_BETINA	Equal variances assumed	130	.000	1.71212
	Equal variances not assumed	129.144	.000	1.71212
PATAH_PELEPAH	Equal variances assumed	393	.000	.81267
	Equal variances not assumed	237.808	.000	.81267

Lampran 7. Dokumentasi pelaksanaan pengambilan data primer



Terima kasih